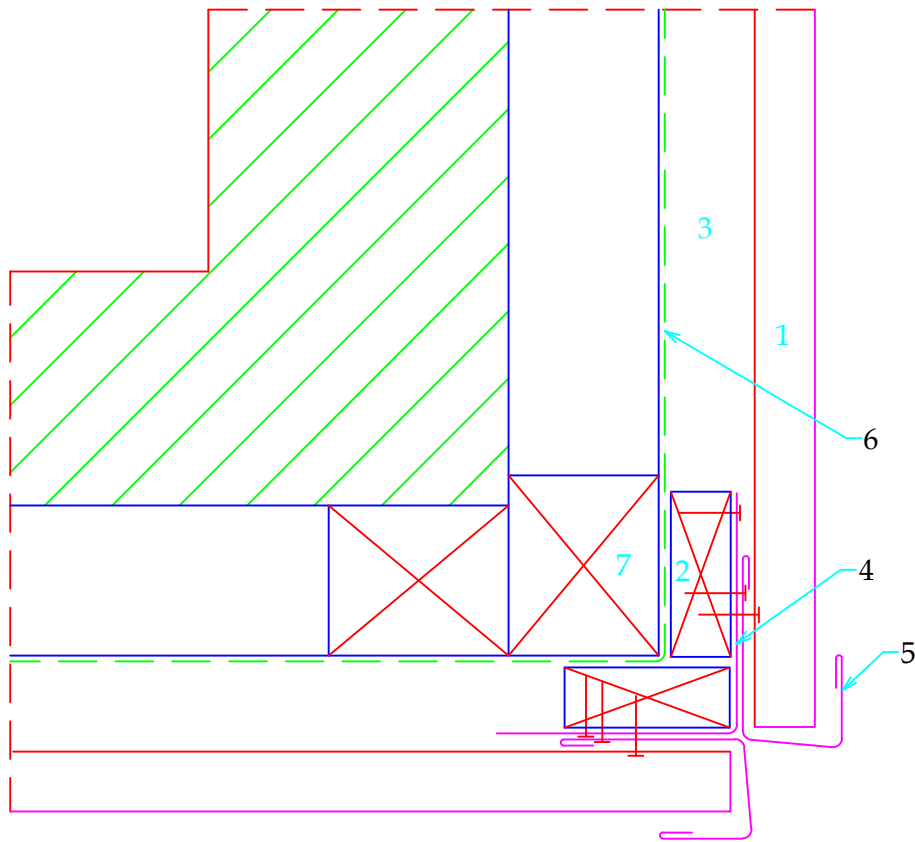


BASE / TOP EDGE

1. Weatherboard Step Panels
2. Framework on ventilated cavity.
3. Ventilated space
4. Parapet Cap
5. Apron flashing
6. Insect mesh (2mm max. weave)
7. Supporting Under-flashing
8. Building wrap / membrane



System	Weatherboard Step Panel	Scale 1:4 @ A4	
Base and Top of Wall	www.Archtech.co.nz info@archtech.co.nz 0800 252 383	NOT A SHOP DRAWING. FOR ILLUSTRATION ONLY	Page # 1

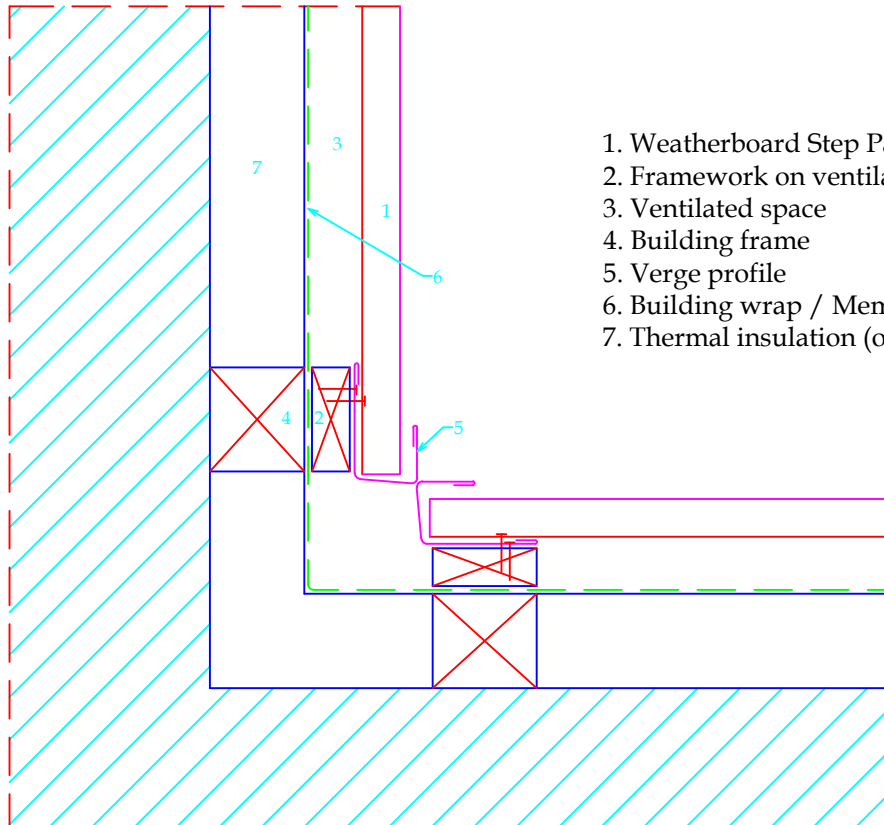


1. Weatherboard Step Panels
2. Framework on ventilated cavity
3. Ventilated space
4. Corner Flashing
5. Verge profile
6. Building wrap / Membrane
7. Building frame



System	Weatherboard Step Panel	Scale NTS @ A4	
External Corner	www.Archtech.co.nz info@archtech.co.nz 0800 252 383	NOT A SHOP DRAWING. FOR ILLUSTRATION ONLY	Page # 2

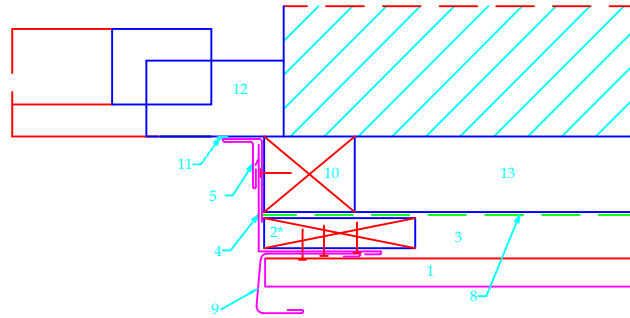
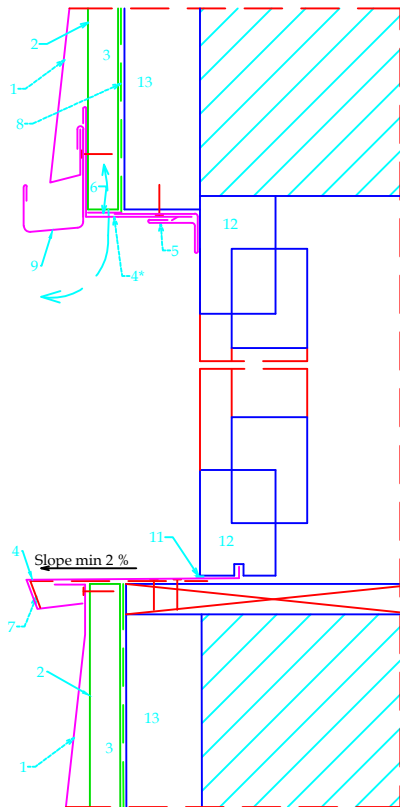
INTERNAL CORNER



1. Weatherboard Step Panels
2. Framework on ventilated cavity
3. Ventilated space
4. Building frame
5. Verge profile
6. Building wrap / Membrane
7. Thermal insulation (optional)



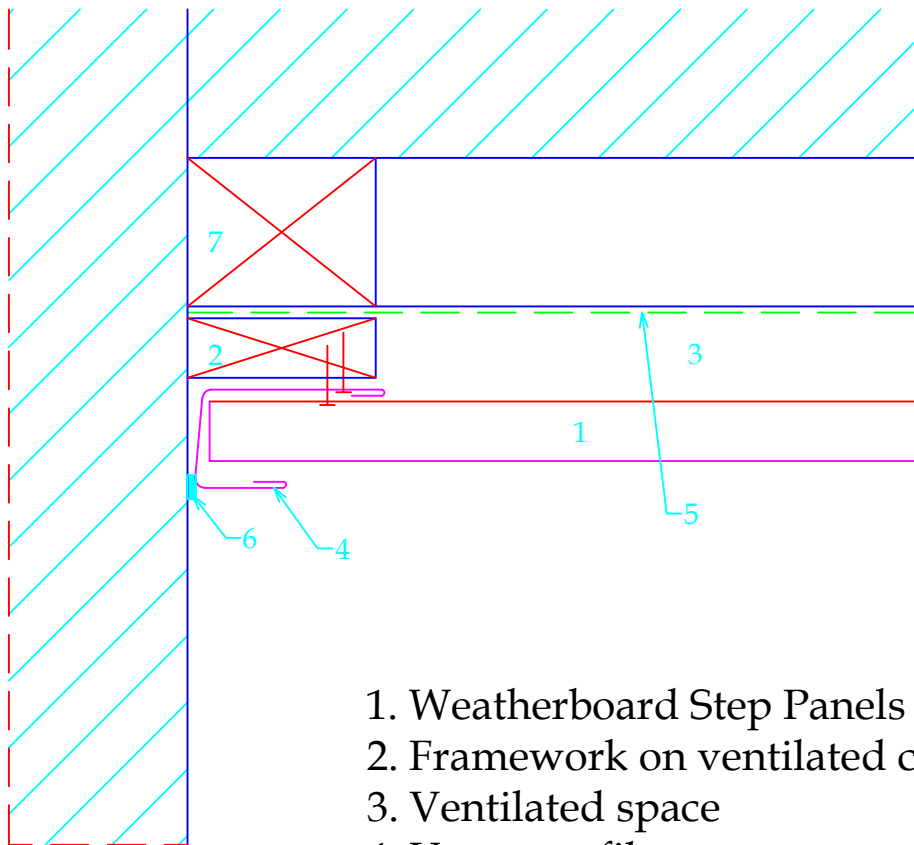
System	Weatherboard Step Panel	Scale NTS @ A4	
Internal Corner	www.Archtech.co.nz info@archtech.co.nz 0800 252 383	NOT A SHOP DRAWING. FOR ILLUSTRATION ONLY	Page # 3



1. Weatherboard Step Panels
2. Framework on ventilated cavity
- 2*. idem 2 built wide = 100 mm
3. ventilated space
4. Custom Flashing
- 4*. Custom Flashing with ventilation openings
5. Pocket flashing
6. Insect mesh (2mm max. weave)
7. Junction flashing
8. Building wrap / Membrane
9. Jamb Flashing
10. Framing
11. Sealant
12. Window profile
13. Thermal insulation (optional)



System	Weatherboard Step Panel	Scale 1:5 @ A4	
Window Details	www.Archtech.co.nz info@archtech.co.nz 0800 252 383	NOT A SHOP DRAWING. FOR ILLUSTRATION ONLY	Page # 4



1. Weatherboard Step Panels
2. Framework on ventilated cavity
3. Ventilated space
4. Verge profile
5. Building wrap / Membrane
6. Flexible sealant
7. Building Frame



System	Weatherboard Step Panel	Scale NTS @ A4	
End of wall	www.Archtech.co.nz info@archtech.co.nz 0800 252 383	NOT A SHOP DRAWING. FOR ILLUSTRATION ONLY	Page # 5